



# MONTHLY MEMBERSHIP PROGRESS REPORT

District 25 E

Results as of: 3/31/2017

GMT: THOMAS MATNEY

LOCATION INDIANA

GMT CA

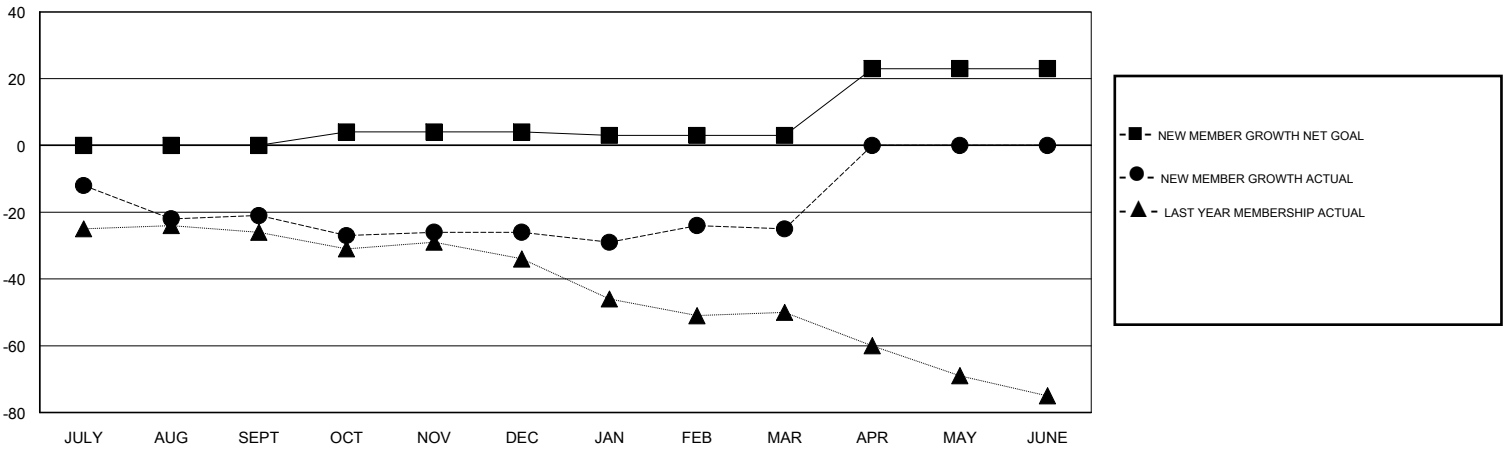
Clubs			
RESULTS FOR 2016-2017			
QUARTER	NEW CLUB GOAL	NEW CLUBS	DROPPED CLUBS
JULY/AUG/SEPT	0	0	0
OCT/NOV/DEC	0	0	0
JAN/FEB/MAR	0	0	0
APR/MAY/JUNE	1	0	0

Members			
RESULTS FOR 2016-2017			
QUARTER	NEW MEMBER GROWTH NET GOAL (not reinstated or transfers)	NEW MEMBER GROWTH ACTUAL (not reinstated or transfers)	DROPPED MEMBERS ACTUAL (including transfers)
JULY/AUG/SEPT	0	25	46
OCT/NOV/DEC	4	25	30
JAN/FEB/MAR	-1	30	29
APR/MAY/JUNE	20	0	0

GOALS AND ACTUAL NEW CLUBS CUMULATIVE



GOALS AND ACTUAL MEMBERS CUMULATIVE



DROPPED CLUBS: 0	29 CLUBS OF 65 ADDED 1 OR MORE NEW MEMBERS	<b>GENDER DISTRIBUTION</b>
		MALE 989 (64.98%)
		FEMALE 533 (35.02%)
<b>DROPPED MEMBERS</b>	<a href="#">CLICK HERE FOR CUMULATIVE MEMBERSHIP DATA</a>	TOTAL FAMILY UNIT MEMBERS 536
DECEASED 15		FAMILY MEMBERS PAYING HALF DUES 275
CLUB CANCELLED 0		
OTHER 90		
<b>TOTAL 105</b>		